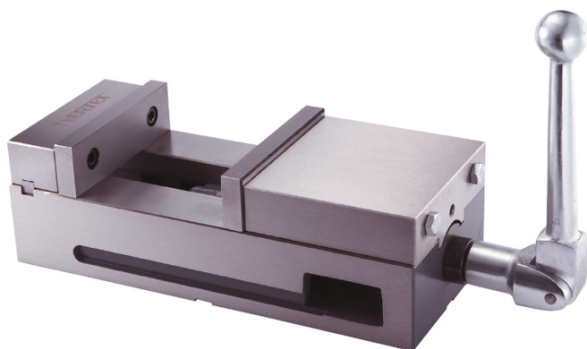


## Lock-Fixed II Precision Machine Vise

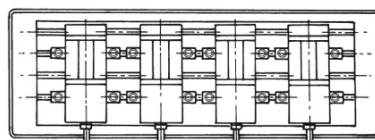
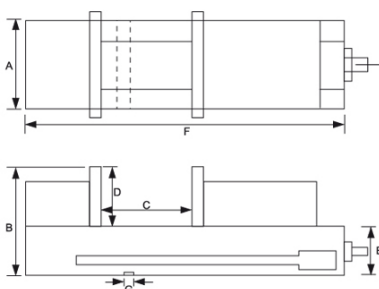


ORDER NO.  
VMC-4  
VMC-6



Performed sided vertically.

- With the ability of lock-fixed III 2, 3, 4, 5.
- Use the semi-sphere segment principle.
- When operate several vises (in a row) put on one machine bed, the operating situation is showed as below:



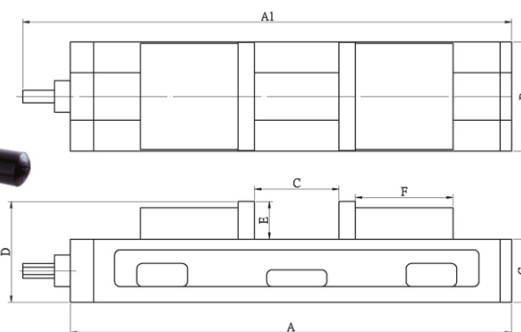
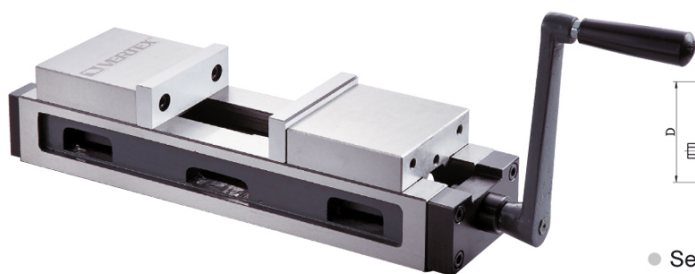
Performed jointly.

ORDER NO.	A	B	C OPEN	D	E	F	G	Max. Clamp Force (kgs)	Meas CUFT	Weight (kgs)	CODE NO.
VMC-4	108	100	100	37	63	285	16	1500	0.4	14.2	1002-185
VMC-6	156	120	142	46	74	368	16	2500	1.1	29.8	1002-186

## Compound Precision Vise

SELF-CENTERING

NEW



- Self centering. Suit for rough or irregular workpiece.
  - Compact design
  - High Accuracy
  - Super open capacity=190mm
  - Suitable for irregular workpiece.
- Rapid and convenient centralizing.

ORDER NO.	A	A1	B	C OPEN	D	E	F	G	Weight (kgs)	CODE NO.
VCV-44	420	469	108	185	98	36	102	62	17.7	1002-240