

Prisma Jaw



ORDER NO.
 VWS-VK-4.5.6.8 VWS-VHO-5.6.8
 VWS-VA-4.5.6.8 VWS-VW-3.4.5
 VWS-VH-4.5.6.8 VWS-VMC-4.6
 VWS-VJ-400.500.600 VWS-VQS-3.4.5

| V CLAMPING CAPACITY | |
|---------------------|------------|
| HORIZONTAL V | VERTICAL V |
| Ø25 | Ø25 |
| Ø25 | Ø25 |
| Ø30 | Ø30 |
| Ø40 | Ø40 |

| ORDER NO. | kgs | CODE NO. |
|-----------|--------|----------|
| VWS-VK-4 | 0.26kg | 1002-110 |
| VWS-VK-5 | 0.36kg | 1002-111 |
| VWS-VK-6 | 0.46kg | 1002-112 |
| VWS-VK-8 | 1.16kg | 1002-113 |

| ORDER NO. | kgs | CODE NO. |
|-----------|--------|----------|
| VWS-VW-3 | 0.21kg | 1002-120 |
| VWS-VW-4 | 0.36kg | 1002-121 |
| VWS-VW-5 | 0.44kg | 1002-122 |

| ORDER NO. | kgs | CODE NO. |
|-----------|--------|----------|
| VWS-VA-4 | 0.4kg | 1002-130 |
| VWS-VA-5 | 0.51kg | 1002-131 |
| VWS-VA-6 | 0.96kg | 1002-132 |
| VWS-VA-8 | 1.76kg | 1002-133 |

| ORDER NO. | kgs | CODE NO. |
|-----------|--------|----------|
| VWS-VMC-4 | 0.35kg | 1002-140 |
| VWS-VMC-6 | 0.4kg | 1002-141 |

| ORDER NO. | kgs | CODE NO. |
|-----------|-----|----------|
| VWS-VHO-5 | | 1002-145 |
| VWS-VHO-6 | | 1002-146 |
| VWS-VHO-8 | | 1002-147 |

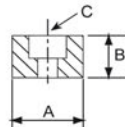
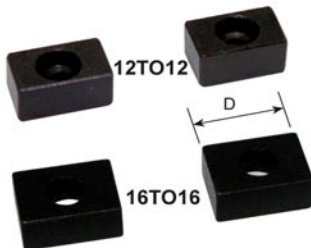
| ORDER NO. | kgs | CODE NO. |
|------------|--------|----------|
| VWS-VJ-400 | 0.36kg | 1002-163 |
| VWS-VJ-500 | 0.58kg | 1002-164 |
| VWS-VJ-600 | 0.9kg | 1002-165 |

| ORDER NO. | kgs | CODE NO. |
|-----------|--------|----------|
| VWS-VH-4 | 0.44kg | 1002-150 |
| VWS-VH-5 | 0.70kg | 1002-151 |
| VWS-VH-6 | 0.88kg | 1002-152 |
| VWS-VH-8 | 1.78kg | 1002-153 |

| ORDER NO. | kgs | CODE NO. |
|-----------|--------|----------|
| VWS-VQS-3 | 0.3kg | 1002-160 |
| VWS-VQS-4 | 0.42kg | 1002-161 |
| VWS-VQS-5 | 0.51kg | 1002-162 |

SCREW GUIDE BLOCK

Thread Rod Guide Block

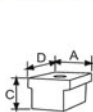


- For quick vise setup
- Multi - Purpose
- 4 PCS / SETS
- Match vise with Machine table slot
- Material: S45C

For vise

| ORDER NO. | A | -0.01 -0.08 | B | C For | D | WEIGHT kgs | CODE NO. |
|-----------|----|----------------|----|----------|----|---------------|----------|
| 12TO12 | 12 | | 10 | M4 | 20 | 0.07 | 1002-370 |
| 14TO14 | 14 | | 10 | M5 | 20 | 0.07 | 1002-371 |
| 16TO16 | 16 | | 10 | M6 | 22 | 0.09 | 1002-372 |
| 18TO18 | 18 | | 12 | M6 | 22 | 0.13 | 1002-373 |
| 20TO20 | 20 | | 12 | M6 | 24 | 0.20 | 1002-374 |

Thread Rod Guide Block

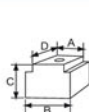


- For quick vise setup
- Multi - Purpose
- 4 PCS / SETS
- Material: S45C

For vise

| ORDER NO. | A | -0.01 -0.08 | B | -0.01 -0.08 | C | D | E | WEIGHT kgs | CODE NO. |
|-----------|----|----------------|----|----------------|----|----|----|---------------|----------|
| 16TO14 | 16 | | 14 | | 14 | 20 | M6 | 0.10 | 1002-350 |
| 18TO14 | 18 | | 14 | | 16 | 20 | M6 | 0.12 | 1002-351 |
| 18TO16 | 18 | | 16 | | 16 | 20 | M6 | 0.13 | 1002-352 |

Thread Rod Guide Block



- For quick vise setup
- Multi - Purpose
- 4 PCS / SETS
- Material: S45C

For vise

| ORDER NO. | A | -0.01 -0.08 | B | -0.01 -0.08 | C | D | E | WEIGHT kgs | CODE NO. |
|-----------|----|----------------|----|----------------|----|----|----|---------------|----------|
| 14TO16 | 14 | | 16 | | 14 | 20 | M6 | 0.12 | 1002-361 |
| 14TO18 | 14 | | 18 | | 16 | 20 | M6 | 0.13 | 1002-362 |
| 16TO18 | 16 | | 18 | | 16 | 20 | M6 | 0.15 | 1002-363 |