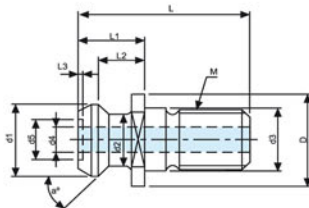


## Pull Studs



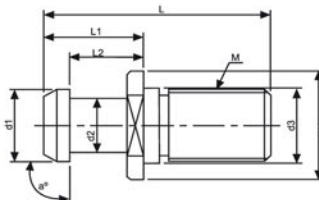
MAZAK FOR MAZAK MACHINE



ORDER NO.	TAPER NO.	a°	L	L1	L2	L3	D	d1	d2	d3	d4	d5	M	CODE NO.
BT-533	MAZAK BT50	45	65.2	25.2	17.58	1.8	37	28.95	20.83	25	10	16	M24	3215-077
BT-534	MAZAK BT40	45	44.1	19.1	14		22	18.8	12.45	17	7		M16	3215-078
BT-535	MAZAK CAT40	45	44.1	16.1	11		22	18.8	12.45	17	7		M16	3215-079

Unit:mm

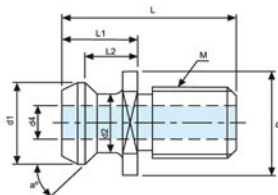
mitsui FOR MITSUI MACHINE



ORDER NO.	TAPER NO.	a°	L	L1	L2	D	d1	d2	d3	M	CODE NO.
BT-536	mitsui BT40	90	50	25	18	23	15	10	17	M16	3215-080
BT-537	mitsui BT50	90	71	31	23	36	24	18	25	M24	3215-081

Unit:mm

CAT FOR ANSI B5-50



ORDER NO.	TAPER NO.	a°	L	L1	L2	D	d1	d2	d4	M	CODE NO.
BT-538	CAT40	45	38.1	16.2	11.2	23.8	18.8	12.4	7.1	5/8"	3215-082
BT-539	CAT50	45	58.4	25.4	17.8	36	28.9	20.8	11.8	1"	3215-083

Unit:mm

PULL STUDS