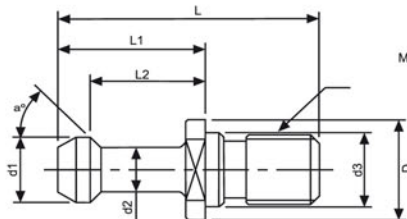


Pull Studs



CAT-BT FOR BT MACHINE



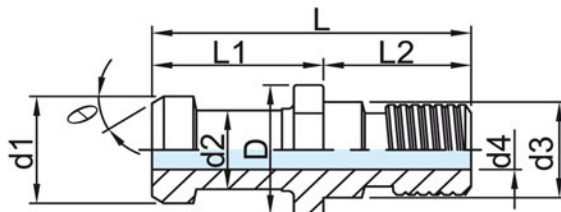
Unit:mm

ORDER NO.	TAPER NO.	a°	L	L1	L2	D	d1	d2	d3	M	CODE NO.
BT-540	CAT40X45°	45	57	32	25	23	15	10		5/8"	3215-084
BT-541	CAT40X60°	60	57	32	25	23	15	10		5/8"	3215-085
BT-542	CAT40X90°	90	57	32	25	23	15	10		5/8"	3215-086
BT-543	CAT50X45°	45	78.6	45	35.2	38	23	17		1"	3215-087
BT-544	CAT50X60°	60	78.6	45	35.2	38	23	17		1"	3215-088
BT-545	CAT50X90°	90	78.6	45	35.2	38	23	17		1"	3215-089
BT-546	CAT40X45°*M	45	57	32	25	23	15	10	17	M16	3215-090
BT-547	CAT40X60°*M	60	57	32	25	23	15	10	17	M16	3215-091
BT-548	CAT40X90°*M	90	57	32	25	23	15	10	17	M16	3215-092

Pull Studs

FOR JIS 6339B-40P

With Collant Hole
OKUNMA JIS #40



Unit:mm

ORDER NO.	TAPER NO.	a°	L	L1	L2	D	d1	d2	d3	d4	M	CODE NO.
BT-556	JIS	30	54	29	23	23	19	14	17	7	M16	3215-111

STEEL: SNCM-21