

FBB Finish Boring Head



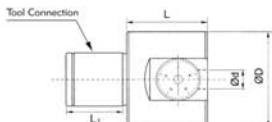
Boring diameter from $\varnothing 3$ - $\varnothing 40$ mm



BORING CAPACITY
 FBB44 $\varnothing 8$ - $\varnothing 20$ m/m
 FBB55 $\varnothing 12$ - $\varnothing 40$ m/m
 FBB66 $\varnothing 8$ - $\varnothing 40$ m/m

FEATURES:

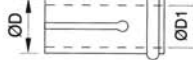
- Available are three different styles enabling small diameter boring from $\varnothing 8$ mm to $\varnothing 40$ mm. Boring range can be within $\varnothing 3$ mm to $\varnothing 10$ mm if small diameter solid carbide boring bar has been employed.
- The dial has been graduated into 50 divisions, each of which is 0.01mm on diameter. Available is a subdial for finer adjustment.
- High precision internal lead screw with inner lubrication is free from the effects of chip, featuring high durability.
- Cartridge unit is housed in a square structure with two face support, proving high stability and rigidity.



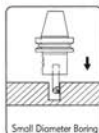
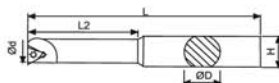
ORDER NO.	Tool Connection	$\varnothing d$ Internal Diameter	$\varnothing D$ External Dimeter	L length	L ₁	mm feed	Weight (kg)	CODE NO.
FBB44	B4070	10	39	32	$\varnothing 22 \times 24L$	0-2	0.4	3320-390
FBB55	B5060	12	50	40	$\varnothing 28 \times 30L$	0-3.5	0.8	3320-391
FBB66	B6065	16	64	50	$\varnothing 36 \times 40L$	0-5	1.4	3320-392

BORING BAR SLEEVE FOR FBB66

ORDER NO.	D mm	D ₁ mm	Applicable Carbide Tool Holder	CODE NO.
EC1608	16	8	ST08-5M	3320-393
EC1610	16	10	ST10-6M	3320-394
EC1612	16	12	ST12-6M	3320-395



Small Diameter Boring Head FBB44



FOR FBB44 BORING CAPACITY FROM $\varnothing 8$ - $\varnothing 20$ MM

ORDER NO.	$\varnothing D$ mm	$\varnothing d$ mm	L mm	L ₂ mm	H mm	Insert	Clamp Screw	Wrench	CODE NO.
BRB1008-32	10	8	64	32	9	TBGT060104 KYOCERA	M2	T6	3320-400
BRB1010-40		10	72	40					3320-401
BRB1012-45		12	77	27		TPGB090204 KYOCERA	M2.5	T8	3320-402
BRB1016-45		16	77	27					3320-403
BRB1020-45		20	77	27		TPGB090204 KYOCERA	M2.5	T8	3320-404
BRB10-5PCS/SET	BRB1008-32	BRB1010-40	BRB1012-45	BRB1016-45	BRB1020-45				3320-405

FOR FBB66 BORING CAPACITY FROM $\varnothing 8$ - $\varnothing 40$ MM

ORDER NO.	$\varnothing D$ mm	$\varnothing d$ mm	L mm	L ₂ mm	H mm	Insert	Clamp Screw	Wrench	CODE NO.
BRB1608-32	16	8	74	32	15	TBGT060104 KYOCERA	M2	T6	3320-406
BRB1610-40		10	75	40					3320-407
BRB1612-53		12	85	53		TPGB090204 KYOCERA	M2.5	T8	3320-408
BRB1616-68		16	100	68					3320-409
BRB1620-83		20	115	83		TPGB090204 KYOCERA	M2.5	T8	3320-410
BRB1625-90		25	122	90					3320-411
BRB1630-90		30	122	90					3320-412
BRB1640-90		40	122	90					3320-413
BRB16-8PCS/SET	BRB1608-32	BRB1610-40	BRB1612-53	BRB1616-68				3320-414	
	BRB1620-83	BRB1625-90	BRB1630-90	BRB1640-90					