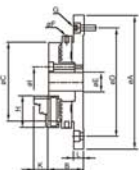


## Low Profile Chuck



NEW



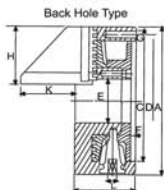
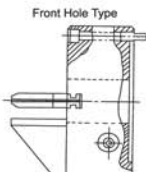
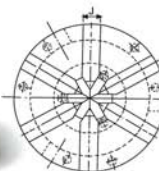
- Compact, Small And Light Weight
- No Wrench Required, Turn To Loose & Lock By Fixing Ring
- Steel Made Body
- Reversible Jaws
- VLBK-Series Is Latest Vertical Clamping Design For CNC, Milling Machine And Machining Center.

### DIMENSIONS

ORDER NO.	A	B	C	D	E	F	G	H	I	J	K	L	Gripping Range		Weight (kgs)	CODE NO.
													O.D. Range	I.D. Range		
VLBK-2	118	28	63	100	16	4	4-M5X0.8P	27	26	8	13	8	ø0.8-ø63	ø23-ø58	1.2	5002-130
VLBK-3	143	37	85	116	20	4	4-M6X1.0P	35	32	11	15	10.5	ø1-ø81	ø31-ø70	2.9	5002-131
VLBK-4	168	39	110	140	26	5	4-M6X1.0P	42	40	14	19	10	ø1-ø100	ø36-ø90	4.6	5002-132
VLBK-5	202	45	130	168	32	6	4-M8X1.25P	50	49	16	21	11.5	ø1.5-ø116	ø43-ø106	6.2	5002-133
VLBK-6	248	52	160	208	50	8	4-M10X1.5P	65	70	19	26	15	ø1.5-ø160	ø52-ø148	11	5002-134



## 6-Jaw Awl Type Chucks



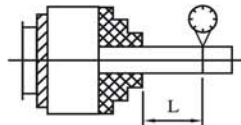
### SPECIFICATIONS

ORDER NO.	A	B	C	D	E	F	G	H	J	K	L	Gross Weight (kgs)	Max. Speed (r.p.m.)	Max. Gripping Diameter		CODE NO.
														O.D. Clamping	O.D. Clamping	
VAS-4	112	58	80	95	32	4.5	3-M8	45	14	46	8	4.2	1200	ø2-32	ø2-32	5005-011
VAS-6	167	65	130	147	60	5	3-M10	66	19	43	10	9.2	1200	ø3-60	ø3-60	5005-012

Unit mm

## Quality standard For Lathe Chuck

### Accuracy



ORDER NO.	VSC-3,4,5,6,7,8,9,10,12,14,16 VSK-4,5,6,7,8,9,10,12,14,16 VMJ-6,8,10,12,150,200,250,300 VNBK-6,8,10,12	VSC-3A,4A,5A,6A,7A,8A,9A,10A VSC-12A,16A,20A,25A VSK-6A,8A,10A,12A,13A,16A VPS-6A,8A,10A,12A,6AK,8AK VPS-10AK,12AK VSKC-6A,8A,10A,12A VSC-3D,4D,5D,6D,8D,10D VKC-4,5,6,8,10,12B,14,16,20,25 VKC-32,40,50
TEST ITEM	L	L
RADIAL RUNOUT	0.05 / 50 mm	0.10 / 50 mm