

FBB Finish Boring Head



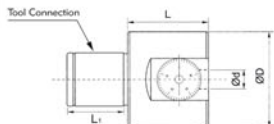
Boring diameter from Ø3 - Ø40 mm



BORING CAPACITY
 FBB44 Ø8 - Ø20 m/m
 FBB55 Ø12 - Ø40 m/m
 FBB66 Ø8 - Ø40 m/m

FEATURES:

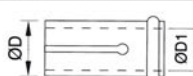
- Available are three different styles enabling small diameter boring from Ø8mm to Ø40mm. Boring range can be within Ø3mm to Ø10mm if small diameter solid carbide boring bar has been employed.
- The dial has been graduated into 50 divisions, each of which is 0.01mm on diameter. Available is a subdial for finer adjustment.
- High precision internal lead screw with inner lubrication is free from the effects of chip, featuring high durability.
- Cartridge unit is housed in a square structure with two face support, proving high stability and rigidity.



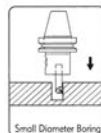
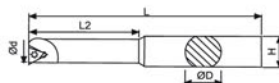
ORDER NO.	Tool Connection	Ød Internal Diameter	ØD External Dimeter	L length	L1	mm feed	Weight (kg)	CODE NO.
FBB44	B4070	10	39	32	Ø22x24L	0-2	0.4	3320-390
FBB55	B5060	12	50	40	Ø28x30L	0-3.5	0.8	3320-391
FBB66	B6065	16	64	50	Ø36x40L	0-5	1.4	3320-392

BORING BAR SLEEVE FOR FBB66

ORDER NO.	D mm	D1 mm	Applicable Carbide Tool Holder	CODE NO.
EC1608	16	8	ST08-5M	3320-393
EC1610	16	10	ST10-6M	3320-394
EC1612	16	12	ST12-6M	3320-395



Small Diameter Boring Head FBB44



FOR FBB44 BORING CAPACITY FROM Ø8 - Ø20 MM

ORDER NO.	ØD mm	Ød mm	L mm	L2 mm	H mm	Insert	Clamp Screw	Wrench	CODE NO.
BRB1008-32	10	8	64	32	9	TBGT060104 KYOCERA	M2	T6	3320-400
BRB1010-40		10	72	40					3320-401
BRB1012-45		12	77	27		TPGB090204 KYOCERA	M2.5	T8	3320-402
BRB1016-45		16	77	27					3320-403
BRB1020-45		20	77	27		TPGB090204 KYOCERA	M2.5	T8	3320-404
BRB10-5PCS/SET	BRB1008-32	BRB1010-40	BRB1012-45	BRB1016-45	BRB1020-45				3320-405

FOR FBB66 BORING CAPACITY FROM Ø8 - Ø40 MM

ORDER NO.	ØD mm	Ød mm	L mm	L2 mm	H mm	Insert	Clamp Screw	Wrench	CODE NO.
BRB1608-32	16	8	74	32	15	TBGT060104 KYOCERA	M2	T6	3320-406
BRB1610-40		10	75	40					3320-407
BRB1612-53		12	85	53		TPGB090204 KYOCERA	M2.5	T8	3320-408
BRB1616-68		16	100	68					3320-409
BRB1620-83		20	115	83		TPGB090204 KYOCERA	M2.5	T8	3320-410
BRB1625-90		25	122	90					3320-411
BRB1630-90		30	122	90					3320-412
BRB1640-90		40	122	90					3320-413
BRB16-8PCS/SET	BRB1608-32	BRB1610-40	BRB1612-53	BRB1616-68				3320-414	
	BRB1620-83	BRB1625-90	BRB1630-90	BRB1640-90					