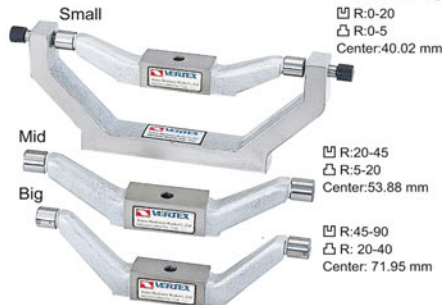


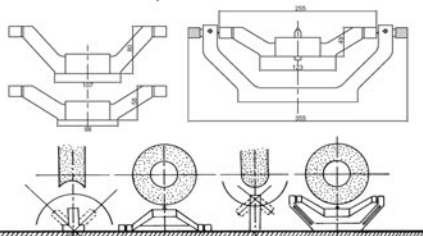
Tangimatic Dresser

ORDER NO.V-TDA CODE NO.2012-001

WEIGHT: 7 kgs



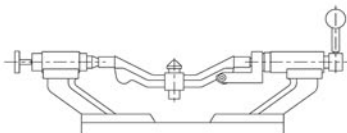
The dresser can be dressing any concave and convex of grinding wheel < Ø205 mm
Concave R: 0-40R (mm)
Convex R: 0-90R (mm)
Max. wheel DIA.: 8" (200 mm)
Diamond dresser pen 10 mm



Tangimatic Dresser Handy Type

ORDER NO.V-TDH CODE NO.2012-002

WEIGHT: 4.5 kgs



The dresser can be dressing any concave and convex of grinding wheel
Convex R: 0.2-20 (mm)
Concave R: 0.2-25 (mm)
For wheel < Ø205 mm

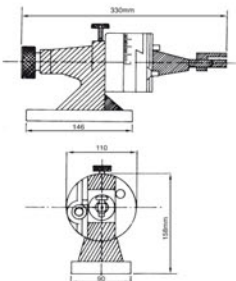
Radius And Angle Dresser

ORDER NO.V-TDB CODE NO.2012-010

WEIGHT: 11.5 kgs



Convex dressing range: 0.8R-40R
Concave dressing range: 0-40R
Max. wheel dressing diameter: 250 mm
Max. wheel extending diameter: 375 mm



- Positive setting of the diamond to absolute center with the special gage included with the dresser.
- Simple, fast, accurate radius setting; no height gage or other set-up aids required. Radius is set on the grinder by measuring over the two pins or by inserting a gage block, as shown, for direct reading. Inside or outside radius is determined simply by sliding the dowel pin to the right for concave and to the left for convex.
- 4x90° graduation in full 360° circle. 6 Minute vernier reading. Chrome plated.
- One push-pull type knob for radius and angle control and for safer and faster operations.
- ACCURACY. Extremely close tolerances are held in the manufacture of this tool, assured by hardening and precision grinding of all critical parts. Ways are chrome hardened.
- ECONOMY. Set-up and dressing time reduced to a bare minimum due to simplicity.